



edson solar

edson Gas

Duplex Stainless Steel Gas Boosted Solar Hot Water

- Reduce your hot water power bill by up to 90%*
- Evacuated Solar Tubes provide superior heat output, even on cloudy days
- Tested to Australian Standards for frost protection (-15°C)
- Generous Government rebates still apply



SR

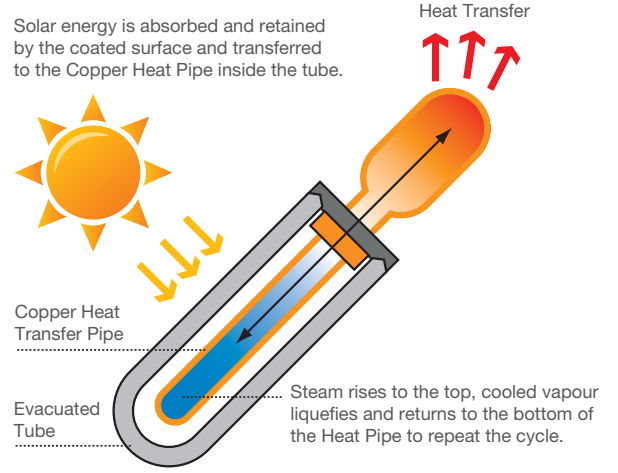
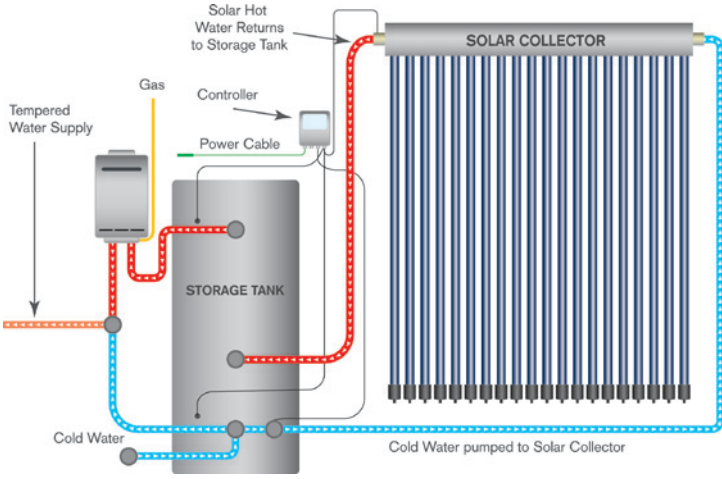
SHC

1300 880 154 | edson.com.au

*Depending on the climate and the model of heater.



HOW THE SYSTEM WORKS

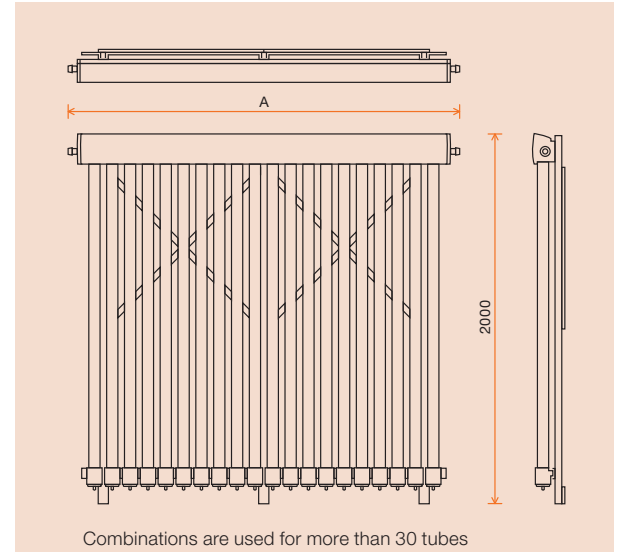


INSTANTANEOUS GAS BOOST

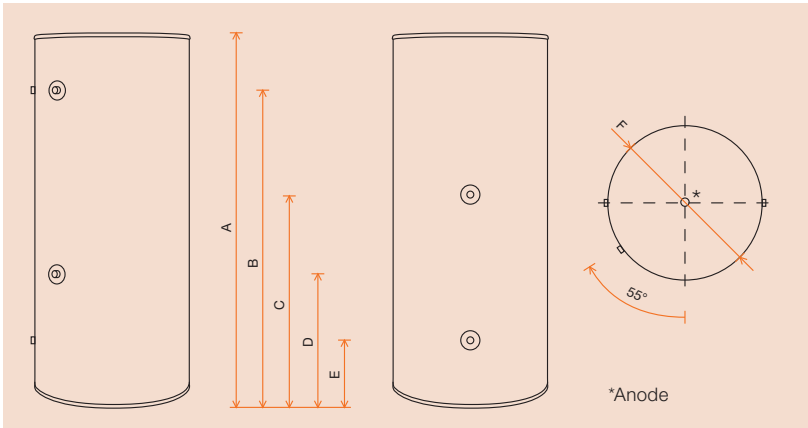
	S20 (LP/NG)	S26 (LP/NG)
Hot Water Delivery	20L per minute	26L per minute
Megajoule Rating	160Mj/hr	199Mj/hr
Water Pressure Min.	120kPa	160kPa
Bathrooms	1 to 2	2 plus

All systems are available as S20 and S26 models using LPG or Natural Gas. Contact your authorised Edson reseller for installation information.

EVACUATED TUBE COLLECTOR



STAINLESS STEEL TANKS



SR EVACUATED TUBES	10	20	30
A Width	880mm	1635mm	2375mm
SHC EVACUATED TUBES	14	20	
A Width	1570mm	2230mm	

SPECIFICATION	ES 250 LITRE	ES 315 LITRE	ES 400 LITRE
A Height	1625mm	1985mm	1830mm
B Hot Water Outlet & PTR Valve	1575mm	1935mm	1540mm
C Sensor Pocket	940mm	1110mm	1005mm
D Solar Return	620mm	735mm	590mm
E Cold Water Inlet	320mm	320mm	270mm
F Diameter	600mm	600mm	700mm
Gas Supply	Natural or LPG	Natural or LPG	Natural or LPG
Gas Flow Rate	1.13–2.75kPa	1.13–2.75kPa	1.13–2.75kPa
Water Flow Minimum	2.5L per minute	2.5L per minute	2.5L per minute
Ambient Water Temp Rise	25°C	25°C	25°C
Material	Duplex Stainless Steel	Duplex Stainless Steel	Duplex Stainless Steel

All dimensions displayed in millimetres. All information and guidelines outlined were correct at the time of printing.

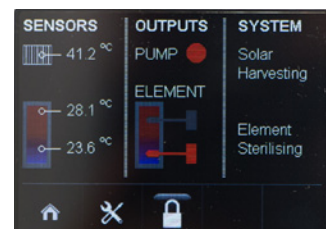
For commercial installations, contact your nearest Edson authorised reseller or refer to www.edson.com.au.



Sales: 1300 880 154 | Service 1300 303 779

Fax: +61 3 9548 5176 | P.O. Box 5008, Cheltenham East, VIC 3192

Email: sales@edson.com.au | edson.com.au | ABN 63 606 991 897



Optional internal touch control available